

Printer Option: printer characters

Connect Mode: connection ways selection

To File: save to a file, there will be a pop-up for store path selection;

Ethernet: Ethernet connecting. The default IP address is 192.168.1.10. It can be changed in "Setting" option.

LPT: Parallel connecting. The default connecting port is LPT1. It can be changed in "Setting" option.

COM: Serial connecting. The default parameter: COM1, Baud rate at 9600, No flow control. They all can be changed in "Setting" option.

USB: USB connecting.

Format: photo format option.

Print NV bit image: bit image downloading mode.

Select bit-image mode: bit image mode selection.

Mode: mode selection

When in bit image downloading mode, below modes for options:

Normal: normal mode selected

Double-Height: double-height mode selected

Double-Width: double-width mode selected

Quadruple: double-height plus double-width mode selected

When in dot image mode, below modes for options:

8-dot single-density

8-dot double-density

24-dot single-density

24-dot double-density

Add: Do add photos (bmp) in list. Up to 16 photos supported.

Del: Delete the currently selected photo.

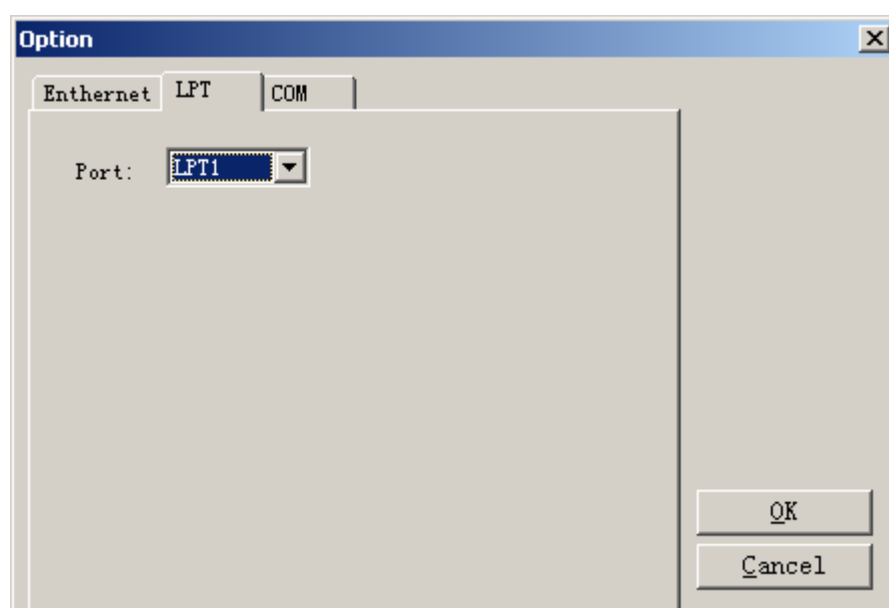
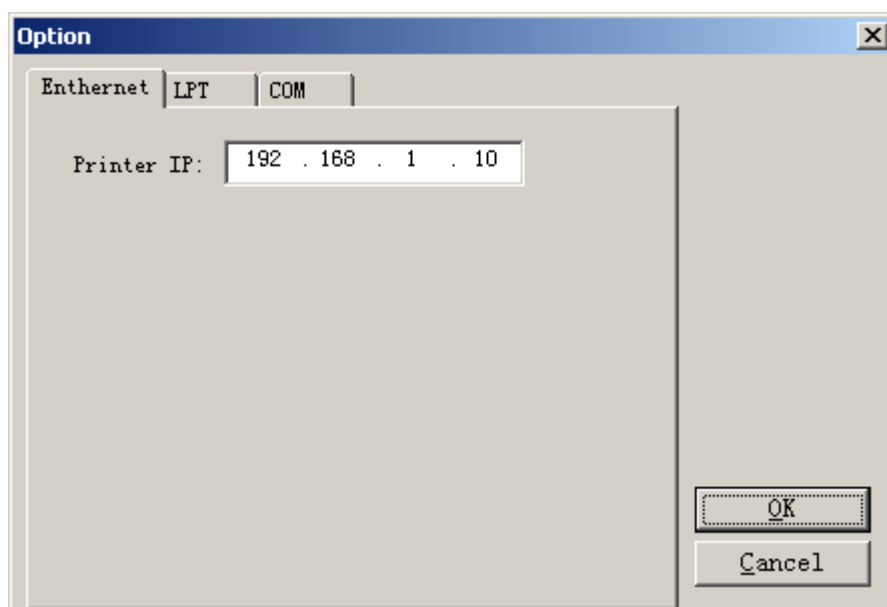
Download All: download in-list images to printer per order (in bit image downloading mode, images will be downloaded to the corresponding position).

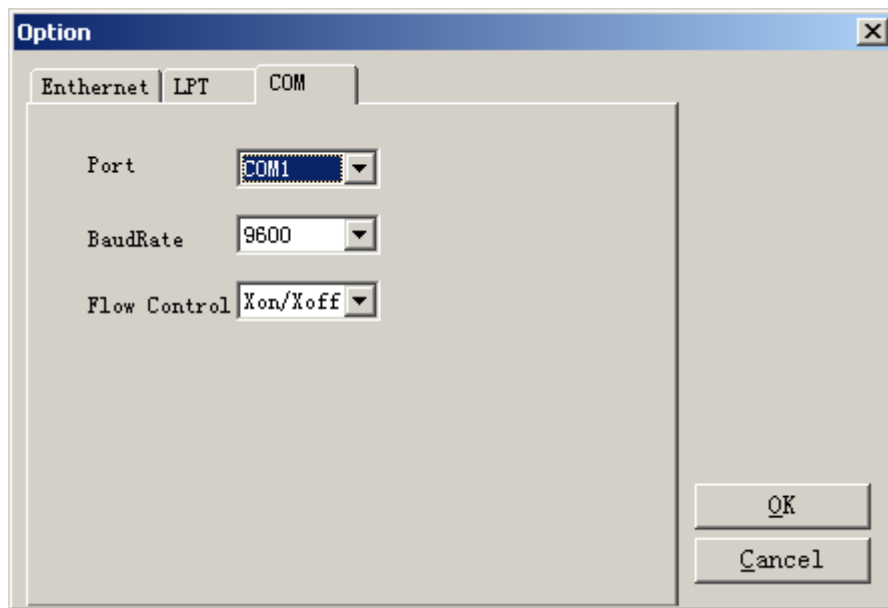
Download Single: download the currently selected image to printer (in bit image downloading mode, images will be downloaded to the corresponding position).

Print NV: print out the selected image. The corresponding quick-clicks are 0~F.

Send File: select a file, transmit the file to printer.

Setting:





And:

1. Ctrl + C: Transmit 0x1B, 0x64, 0x10, 0x1B, 0x6D. That is a half-cut operation follows a ten-line feeding.